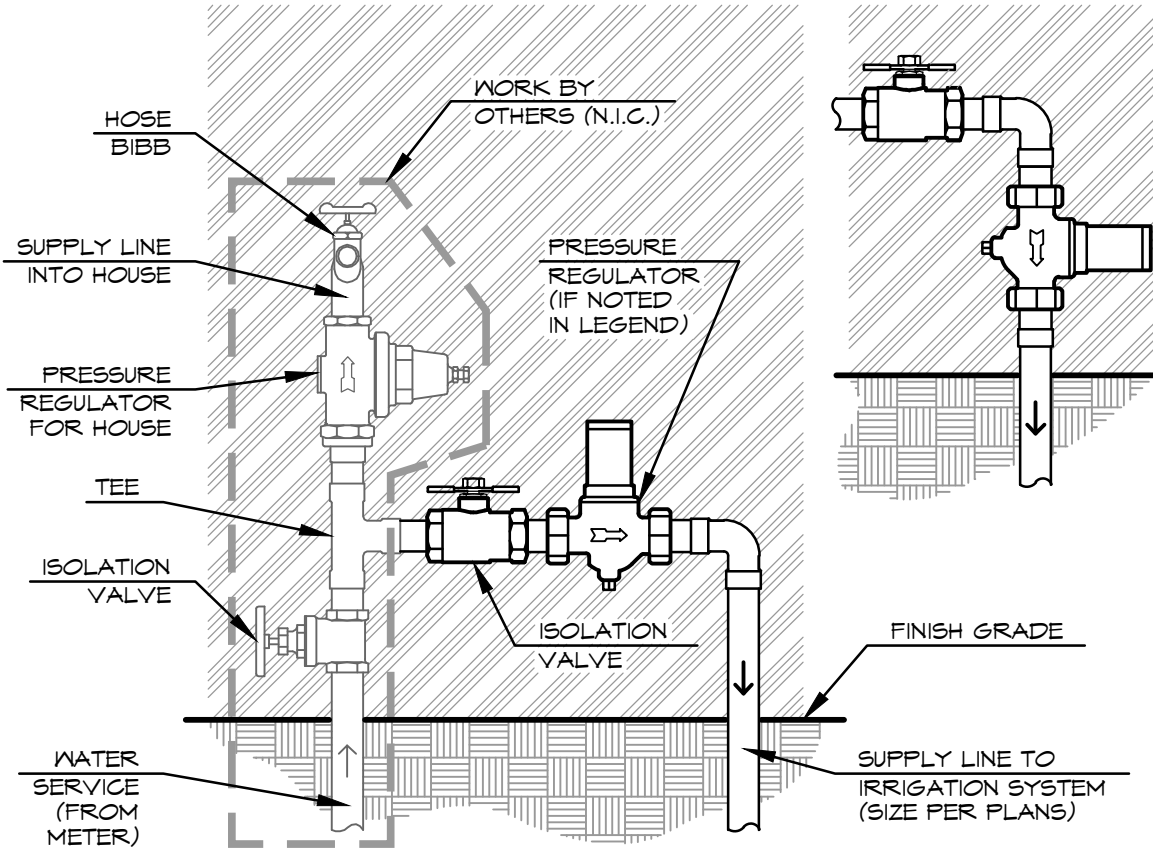


NOTES:

1. COORDINATE POINT OF CONNECTION WITH THE BUILDING PLUMBER.
2. ALL THREADED FITTINGS AND NIPPLES SHALL BE SCH. 80 PVC, IF ACCEPTABLE TO THE APPROVING AGENCY. OTHERWISE, THREADED FITTINGS SHALL BE CL. 125 RED BRASS, AND THREADED NIPPLES SHALL BE SCH. 40 RED BRASS PIPE, AS PER THE SPEC.'S.
3. ALL THREADED CONNECTIONS SHALL BE SEALED DURING ASSEMBLY WITH "PERMATEX #51" PIPE JOINT COMPOUND, OR APPROVED EQUAL, AS RECOMMENDED BY THE MANUFACTURER OF THE SEALANT.
4. INSTALL ISOLATION VALVE SO IT CAN EASILY BE SHUT OFF BY HAND.

VIEW TOWARDS HOUSE

ALTERNATE LAYOUT



C-2

P.O.C. AT HOUSE with ISOLATION VALVE & PRESSURE REGULATOR